

FOR LEASE

NAI Commercial

WHITECOURT MAIN STREET RETAIL



5115 - 50 STREET | WHITECOURT, AB | DOWNTOWN DISTRICT SPACE

PROPERTY HIGHLIGHTS

- High exposure Main Street space located on the corner of 50th Street and 52nd Avenue
- 4,576 sq.ft.± available in the Downtown District with street front patio
- Significant public and street parking adjacent to the building
- Potential for turnkey restaurant/brewery opportunity
- Whitecourt is located on Highway 43, connecting Edmonton to the British Columbia border, via Peace Country, forming the northernmost portion of the CANAMEX Corridor

MAT HEHR

Associate
587 635 2485
mhehr@naiedmonton.com

DEREK CLAFFEY

Senior Associate
587 635 2478
dclaffey@naiedmonton.com



NAI COMMERCIAL REAL ESTATE INC.
4601 99 STREET NW, EDMONTON AB, T6E 4Y1



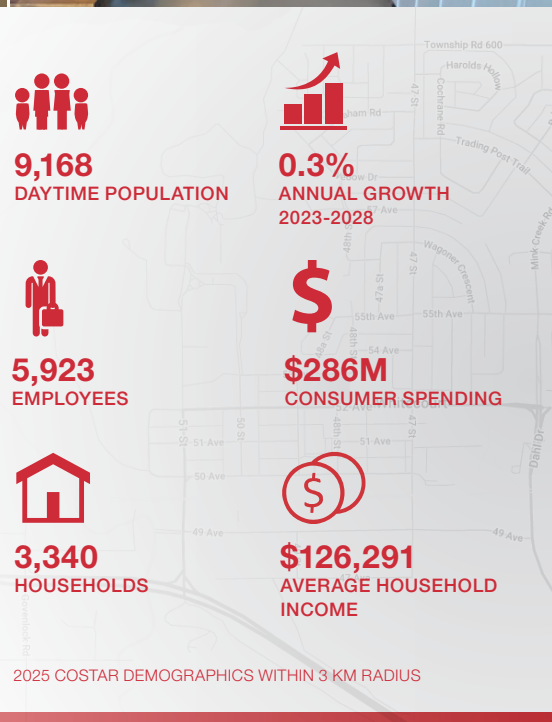
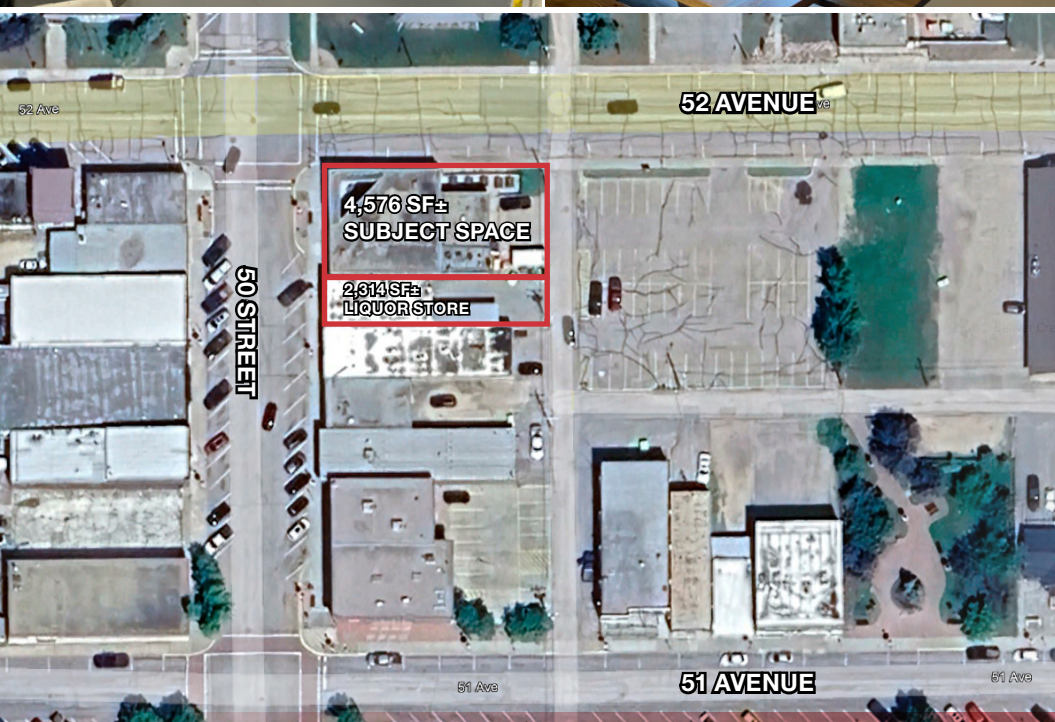
780 436 7410



NAIEDMONTON.COM

ADDITIONAL INFORMATION

AREA AVAILABLE	4,576 sq.ft.
LEGAL DESCRIPTION	Plan 662CL, Block 3, Lot 7-9
ZONING	C-5
AVAILABLE	Immediately
PARKING	Scramble
GROSS LEASE RATE	\$15.00/sq.ft./annum. Utilities not included.



NAI COMMERCIAL REAL ESTATE INC.
4601 99 STREET NW, EDMONTON AB, T6E 4Y1



780 436 7410



NAIEDMONTON.COM

7795 DC25